



**anchor scientific inc.**

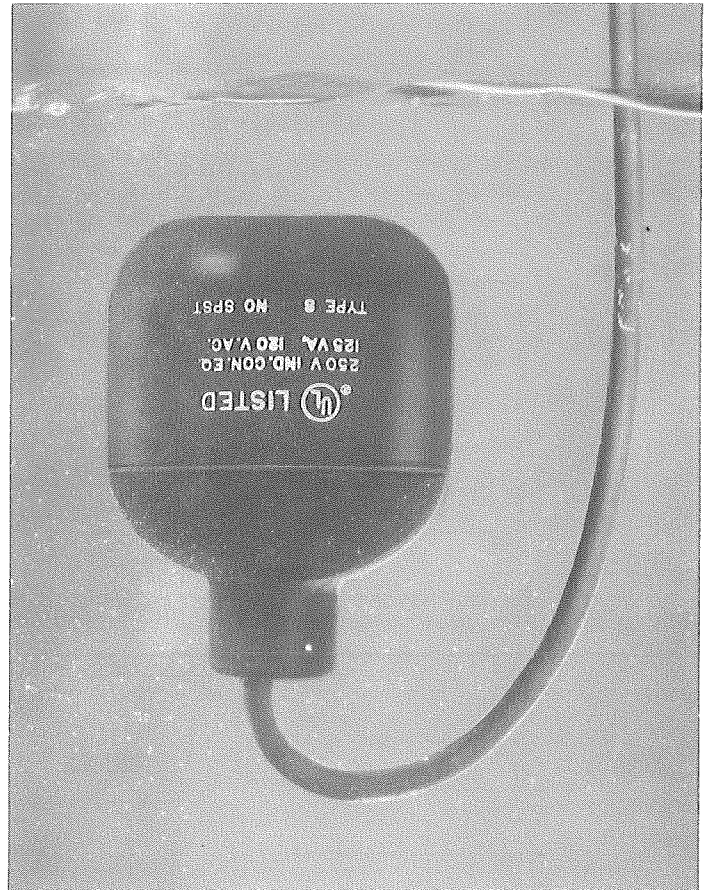
Box 378, Long Lake, MN 55356 / 612-473-7115 / FAX 612-473-6002

**roto-float**

**Type S - Suspended**

Form 2700-B

## TYPE S



**The ROTO-FLOAT is a direct acting float switch.** Each ROTO-FLOAT contains a single pole mercury switch which actuates when the longitudinal axis of the float is horizontal, and deactuates when the liquid level falls 1" below the actuation elevation.

The float is a chemical resistant polypropylene casing with a firmly bonded electrical cable protruding. One end of the cable is permanently connected to the enclosed mercury switch and the entire assembly is encapsulated to form a completely water tight and impact resistant unit. Type S — Suspended has built in weight.

ROTO-FLOATS can be mounted on a support pipe (type P) or suspended from above (type S). Advantages of the ROTO-FLOAT are low cost, simplicity and reliability.



Listed

- Pilot Duty
- Industrial Control Equipment

### CABLE

P.V.C. type STO #18 conductors (41 strand) rated 600 volts • Various lengths available • See table of models • Non-standard lengths also available on special order.

Switch Arrangement	Cable Length	Suspended Type S Model No.	Ship. Wt.
Normally Open	20	S20NO	4#
	30	S30NO	4 1/2#
	40	S40NO	5 1/4#
Normally Closed	20	S20NC	4#
	30	S30NC	4 1/2#
	40	S40NC	5 1/4#

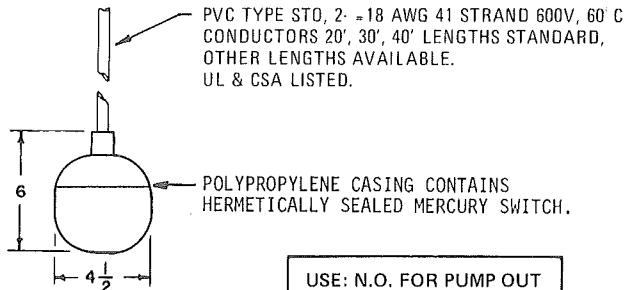
**GENERAL DESCRIPTION:**

THE ROTO-FLOAT IS A DIRECT ACTING FLOAT SWITCH. EACH ROTO-FLOAT CONTAINS A SINGLE POLE MERCURY SWITCH WHICH ACTUATES WHEN THE LONGITUDINAL AXIS OF THE FLOAT IS HORIZONTAL, AND DEACTUATES WHEN THE LIQUID FALLS 1" BELOW THE ACTUATION ELEVATION.

THE FLOAT IS A CHEMICAL RESISTANT POLYPROPYLENE CASING WITH A FIRMLY BONDED ELECTRICAL CABLE PROTRUDING. ONE END OF THE CABLE IS PERMANENTLY CONNECTED TO THE GLASS ENCLOSED MERCURY SWITCH AND THE ENTIRE ASSEMBLY IS ENCAPSULATED TO FORM A COMPLETELY WATER TIGHT AND IMPACT RESISTANT UNIT.

ROTO-FLOATS CAN BE MOUNTED ON A SUPPORT PIPE, (TYPE P); OR SUSPENDED FROM ABOVE, (TYPE S). ADVANTAGES OF THE ROTO-FLOAT ARE LOW COST, SIMPLICITY AND RELIABILITY. VARIOUS CIRCUIT CONFIGURATIONS, OTHER THAN THE ONES LISTED BELOW, ARE AVAILABLE.

**SPECIFICATIONS:**



USE: N.O. FOR PUMP OUT  
N.C. FOR PUMP IN

- UL LISTED, IND. CONT. EQ.  
PILOT DUTY  
4.5 AMPS 120 VAC  
2.25 AMPS 240 VAC
- FLOAT COLOR  
N.O., BLACK  
N.C., RED
- MOUNTING ARRANGEMENT  
TYPE P - PIPE MOUNTED MODEL INCLUDES POLYPROPYLENE CLAMP  
TYPE S - SUSPENDED MODEL WITH STABILIZING WEIGHT.

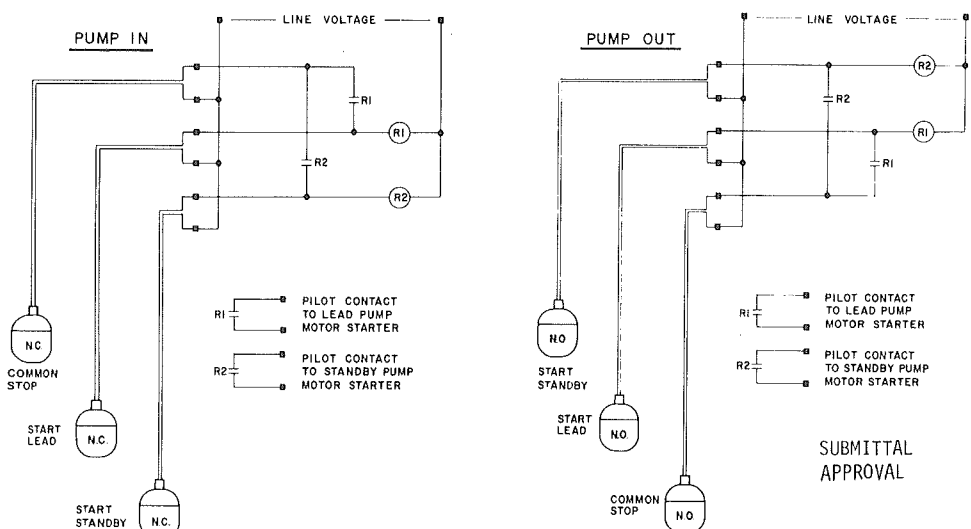
**MODELS:**

SWITCH ARRANGEMENT	CABLE LENGTH	SUSPENDED TYPE S		PIPE MOUNTED TYPE P	
		MODEL NO.	SHIP WT.	MODEL NO.	SHIP WT.
NORMALLY OPEN	20	S20NO	4#	P20NO	2#
	30	S30NO	4 1/2#	P30NO	2 3/4#
	40	S40NO	5 1/2#	P40NO	3 1/2#
NORMALLY CLOSED	20	S20NC	4#	P20NC	2#
	30	S30NC	4 1/2#	P30NC	2 3/4#
	40	S40NC	5 1/2#	P40NC	3 1/2#

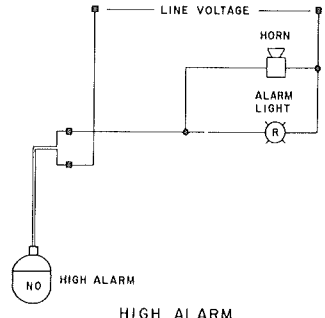
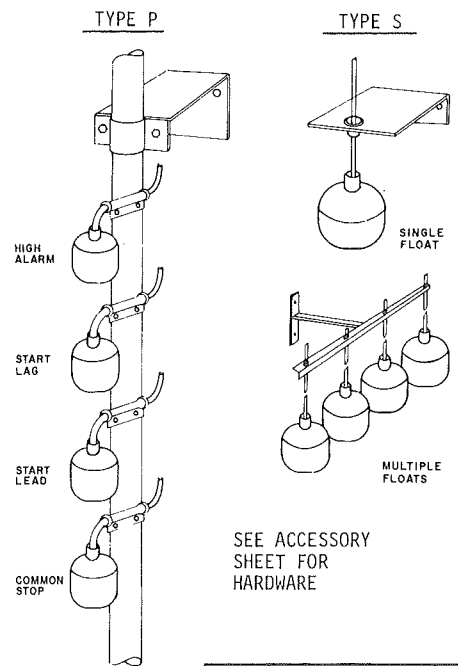
**APPLICATIONS:**

FOR USE IN CONTROLLING PUMPS OR OTHER MACHINES AND MEASURING ALARM LEVELS IN WATER, SEWAGE AND MANY OTHER LIQUIDS. ROTO-FLOATS MAY BE USED FOR PUMP IN OR PUMP OUT CONTROL, FOR LOW LEVEL CUTOUT, OR FOR LOW AND HIGH LEVEL ALARMS.

**TYPICAL 2 PUMP CIRCUITS**



**TYPICAL MOUNTING**



**IMPORTANT NOTE:** Use in accordance with local electrical code and authority having jurisdiction. Do not use Roto-Floats in gasoline, volatiles or other combustibles.

This product contains mercury. Dispose of in accordance with Local, State and Federal Regulations so that mercury does not contaminate the environment.

SUBMITTAL APPROVAL

NAME \_\_\_\_\_

DATE \_\_\_\_\_

OWN BY	DATE
PD	1-9-74
CKD BY	DATE
JA	1-9-74
APPD BY	DATE
DS	4-30-76
PROJECT NAME	
ROTO-FLOAT	
FACTORY ORDER NO.	



**anchor scientific inc.**  
Box 378, Long Lake, MN 55356  
612/473-7115

SPECIFICATION DATA SUBMITTAL AND INSTRUCTION SHEET

DWG. NO. 174 - 4

LETTER A	4-81 REVISIONS	DATE
----------	----------------	------