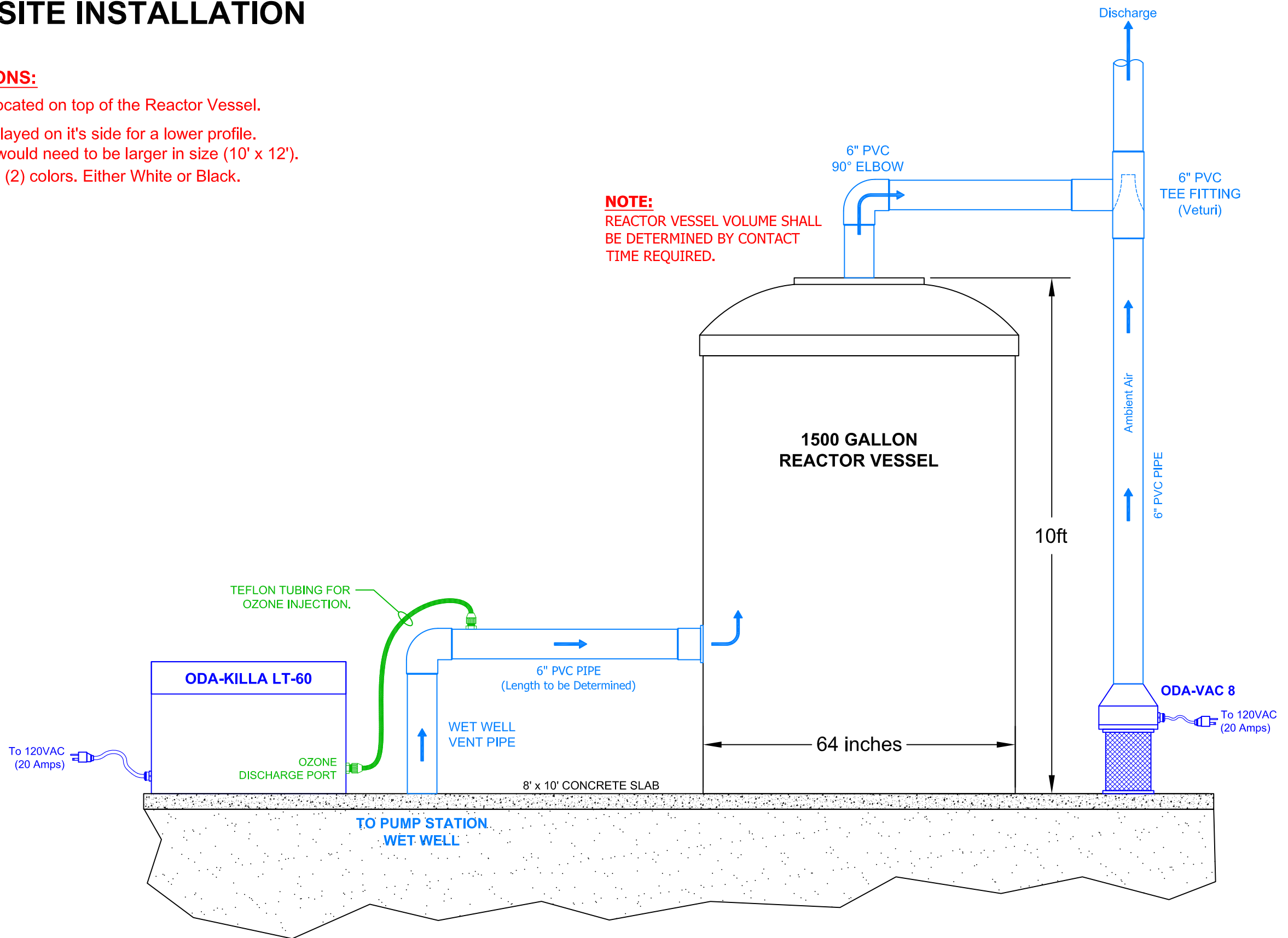


TYPICAL SITE INSTALLATION

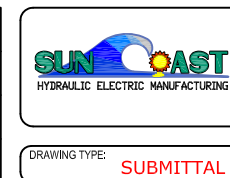
TYPICAL OPTIONS:

1. Fan could be located on top of the Reactor Vessel.
2. Tank could be layed on it's side for a lower profile.
Concrete pad would need to be larger in size (10' x 12').
3. Tank can be in (2) colors. Either White or Black.



REV #	DATE	DRAWN BY	DESCRIPTION

DESIGN & APPROVED BY:
M. F. A. / M.G.
DRAWN BY:
B.W.G.
DATE CREATED:
2-12-2016
SCALE:
N.T.S.



TITLE:
PVC Pipe Detail for
ODA-KILLA LT-60
JOB NUMBER: #####
DRAWING NUMBER:
D#####
SHEET: 1 OF 1
REVISION

DRAWING TYPE: SUBMITTAL