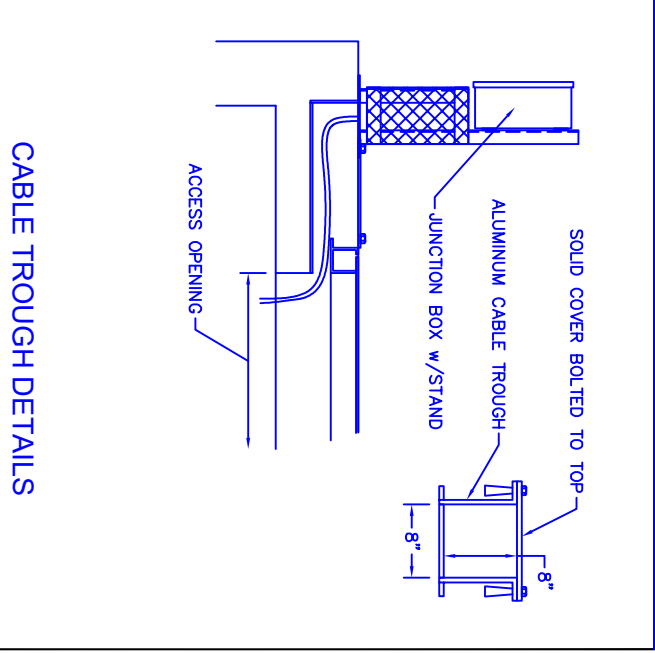
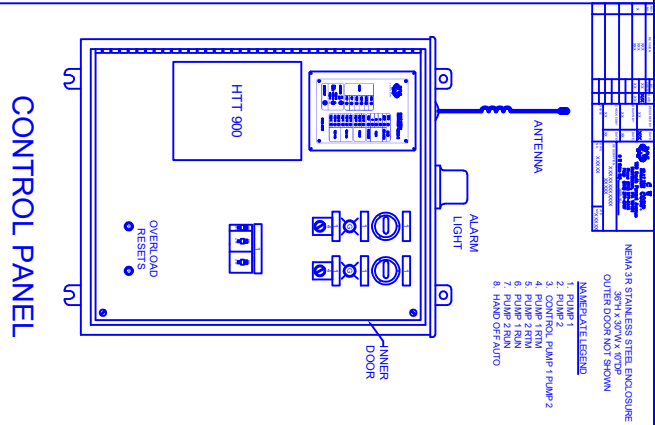
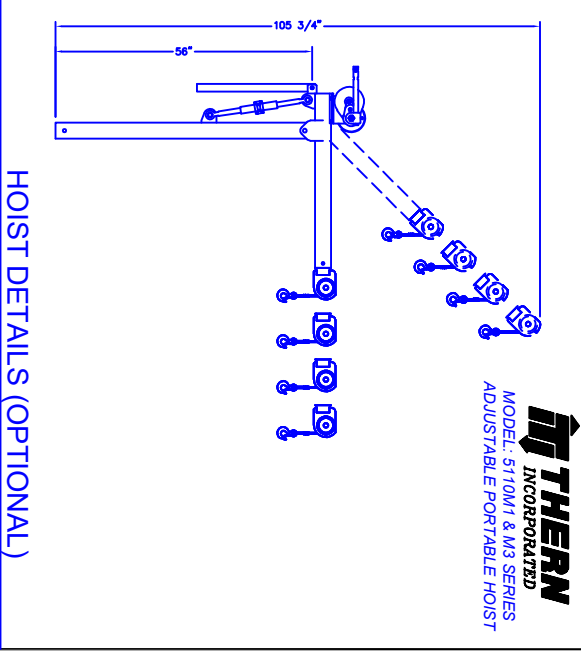
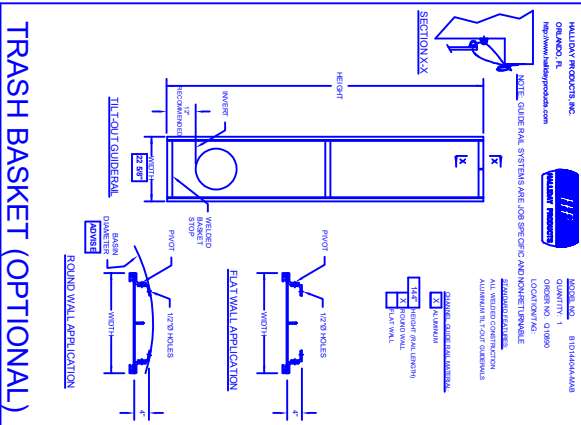


FLOAT CONTROL SETTINGS (FROM FLOOR)	
E	HIGH WATER ALARM
D	LAG PUMP ON
C	LEAD PUMP ON
B	PUMPS OFF
A	LOW WATER ALARM

- NOTES:
1. WET WELL CONFORMS TO ASTM C478 SPECIFICATIONS
 2. EXTERIOR OF WET WELL & VALVE VAULT TO BE TREATED WITH (2) COATS BITUMASTIC COATING (OPTIONAL)
 3. INTERIOR OF WET WELL & VALVE VAULT TO BE TREATED WITH (2) COATS WHITE EPOXY COATING (OPTIONAL)
 4. JOINTS ARE TO BE SEALED IN THE FOLLOWING METHODS:
 - WET WELL: SEALED WITH 2" BUTYL SEALANT (DOUBLE LAYER BELOW GRADE)
 - PIPE PENETRATIONS TO BE SEALED IN THE FOLLOWING METHODS
 - PVC SCH 80 DRAIN PIPE: KOR-N-SEAL FLEXIBLE RUBBER GASKET
 - DISCHARGE PIPING: SEALED WITH KOR-N-SEAL FLEXIBLE RUBBER GASKET
 - INLET PIPE: SEALED WITH KOR-N-SEAL FLEXIBLE RUBBER GASKET

DESCRIPTION	STATION NUMBER	STATION NUMBER
A	WET WELL INVERT	
B	BASE THICKNESS	
C	OUTSIDE BOTTOM ELEVATION	
D	TOP ELEVATION	
E	TOP SLAB THICKNESS	
F	OVERALL HEIGHT	
G	WALL THICKNESS	
H	INSIDE DIAMETER	
I	OUTSIDE DIAMETER	
J	OUTSIDE BASE DIAMETER	
K	INLET PIPE SIZE & TYPE	
L	INLET INVERT	
M	DISCHARGE PIPE SIZE & TYPE	
N	DISCHARGE ELEVATION	
O	CHECK VALVE	
P	PLUG VALVE	
Q	ACCESS COVER SIZE	
R	FINISH GRADE ELEVATION	
S	VENT PIPE SIZE & MATERIAL	
T	S.S. LIFT CHAIN/CABLE SIZE	
U	S.S. GUIDE RAIL SIZE	
V	DISCHARGE PIPING	
W	SUBMERSIBLE GRINDER PUMPS	
	MFR-MODEL (HP / V / PH)	



DRAWN BY:	CHK BY:
DATE: 12/28/11	DATE CHK:
DWG FILE: CWS-Grinder Station layout	

DESCRIPTION: PUMP STATION WET WELL LAYOUT

CW Sales Corporation

199 South Forrest Ave
www.cwsalescorp.com

Norristown, PA 19401

PHONE (866)-60-PUMPS
FAX (610)-277-3797

REVISIONS	DATE	BY