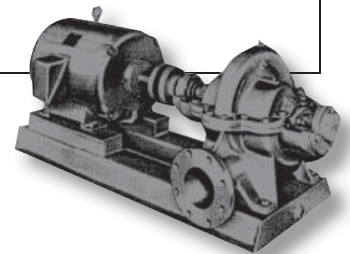
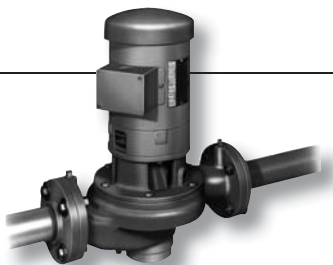


## All Products



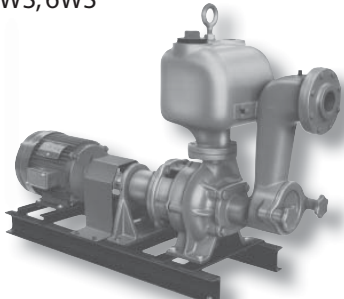
	<i>In-Line</i>	<i>End Suction</i>	<i>Horizontal Split Case Single &amp; Multi-Stage</i>
<b>Applications</b>	Heating, air conditioning, industrial, hydronic heating & cooling systems, & liquid circulation	General water service, domestic water booster system, chilled & hot water systems, cooling tower, sprinkler & irrigation systems	
<b>Capacities to</b>	1,500gpm (95L/s)	2,000gpm (126L/s)	6,000gpm (378L/s)
<b>Heads to</b>	350' (107m)	260' (79m)	460' (140m)
<b>Power</b>	.50-60hp (.38-45kW)	.33-60hp (.25-45kW)	1-300hp (.75-224kW)
<b>Construction Features</b>	<ul style="list-style-type: none"> <li>• Bronze Impellers</li> <li>• Back pull-out design</li> <li>• Mechanical seal</li> <li>• Internal seal flush</li> <li>• NEMA JM drip proof motor</li> <li>• Removable bronze wear ring</li> <li>• Standard 125lb ANSI flange</li> <li>• Pressure gauge tapings at suction &amp; discharge flange</li> </ul>	<ul style="list-style-type: none"> <li>• Direct drive, motor operated</li> <li>• Bronze impeller</li> <li>• Extra deep stuffing box with seal cage (G, K)</li> <li>• Renewable bronze shaft sleeve (G, K)</li> <li>• Renewable bronze suction cover ring (G, K)</li> <li>• Cast iron case</li> <li>• Type AC &amp; AE pumps can be furnished with square suction flange for tank mounting</li> <li>• Bronze, one piece impeller</li> </ul>	<ul style="list-style-type: none"> <li>• Entire rotating element can be removed without disturbing pipe connections or driver</li> <li>• Extra deep stuffing box with split glands</li> <li>• Balanced axial &amp; radial thrust bearings</li> <li>• Seal cages</li> <li>• Clockwise or counter clockwise rotation</li> </ul>
<b>Optional Materials</b>	<ul style="list-style-type: none"> <li>• Standard bronze fitted</li> <li>• Ductile iron casing</li> <li>• TEFC motors</li> <li>• Ceramic or hi temp tungsten carbide seals</li> <li>• Stainless steel shaft seal</li> <li>• 250# Flanges</li> </ul>	<ul style="list-style-type: none"> <li>• Standard bronze fitted</li> <li>• Ductile iron casing</li> <li>• Mechanical seals for various applications and temperatures</li> <li>• Packed stuffing box</li> <li>• External flushing</li> <li>• Shaft sleeves-bronze or stainless steel</li> </ul>	<ul style="list-style-type: none"> <li>• Standard all iron</li> <li>• Ductile iron casing</li> <li>• Mechanical seals, double wear rings, stainless steel shaft sleeves</li> <li>• Vertical mounting available</li> </ul>
<b>Models</b>	1507CV, 2007CV, 2095CV, 2507CV, 2595CV, 3007CV, 3095CV, 4007CV, 4095CV, 6012CV	100, 120, & 200; 4AC, 4AE, 6AC, 6AE, 8AC, 4ACV, 4AEV, 6ACV, 6ADV, 6AFV, 8ACV; 310 & 500; BL, BM, BH, B, BT, BX, G, G-B, GH, GH-B, GT, GL, GL-B, K, K-B, KH, KH-B, KL & KL-B	2L, 3L, 4L, 5L, 6L, 8L, 10L, 12L, 1.5JD, 2JD, 3JD



### Condensate Return

### Sump & Sewage

### Recessed Impeller Vortex

<b>Applications</b>	Condensate returns systems and boiler feed applications	Sump water ejection sewage/solids non-clog ejector systems	For pumping solids up to maximum size capable of passing through the pipe
<b>Capacities to</b>	150gpm (9.5L/s)	2,000gpm (126L/s)	1,200gpm (76L/s)
<b>Heads to</b>	231' (71m)	100' (30m)	115' (35m)
<b>Power</b>	.33-15hp (.25-11kW)	.33-30hp (.25-22kW)	5-70hp (3.75-52kW)
<b>Construction Features</b>	<ul style="list-style-type: none"> <li>• Water gauge</li> <li>• Drip proof motors</li> <li>• Steel venting piping</li> <li>• Mechanical seal designed for full range of temperatures</li> <li>• Bronze impeller</li> <li>• Top pull-out without disturbing piping</li> <li>• Float switches or alternator</li> </ul>	<ul style="list-style-type: none"> <li>• Column pipe has counterbore for accurate alignment</li> <li>• Individual grease lines to bottom and intermediate bearings</li> <li>• Semi-open impeller with repelling vanes on back side</li> <li>• Angular contact thrust bearing</li> <li>• Designed to allow through only solids which will not clog impeller</li> <li>• Drive shaft is ground and polished steel of sufficient size to prevent whipping</li> <li>• Flexible coupling</li> </ul>	<ul style="list-style-type: none"> <li>• All cast iron</li> <li>• Single mechanical seal</li> <li>• Heavy duty bearing housing</li> <li>• Fast access clean out port</li> </ul>
<b>Optional Materials</b>	<ul style="list-style-type: none"> <li>• Simplex &amp; Duplex steel receiver to 400 gallons.</li> <li>• Motor controls mounted and pre-wired</li> </ul>	<ul style="list-style-type: none"> <li>• Various drive shafts and column lengths</li> <li>• Type 304 stainless steel shaft</li> <li>• Cutless rubber bearing</li> <li>• Watertight or explosion proof resistant float switch or alternator</li> <li>• Stainless steel float and rod</li> <li>• Motor controls</li> </ul>	<ul style="list-style-type: none"> <li>• Stainless steel impeller and shaft</li> </ul>
<b>Models</b>	20C, 30C, 45C, 67C, 6S, 10S, 20S, 30S, 45S, 60S, 80S, 100S, 125S, 150S, 200S, 300S, 400S 	S and SA MG-VS SM-VS SML-VS 	2WSC, 3WSC, 2WC, 3WC, 2WS, 3WS, 2W, 3W, 4W, 6W, 4WS-VB, 6WS-VB, 4WS, 6WS 

# WEINMAN®

[www.cranepumps.com](http://www.cranepumps.com)

**Crane Pumps & Systems**  
420 Third Street  
Piqua, Ohio 45356  
Phone: 1-937-778-8947  
Fax: 1-937-773-7157

**Crane Pumps & Systems Canada**  
83 West Drive  
Bramalea, Ont. Canada L6T 2J6  
Phone: 1-905-457-6223  
Fax: 1-905-457-2650

  
**CW SALES CORPORATION**  
**1-866-60-PUMPS**  
[cwsalescorp.com](http://cwsalescorp.com) [cwsales@cwsalescorp.com](mailto:cwsales@cwsalescorp.com)

© 2007 Crane Pumps & Systems, Inc.  
A Crane Co. Company  
Printed in U.S.A.  
WFLCAT - Rev. A1 (7/08)

**CRANE**  
PUMPS & SYSTEMS